



SCIENTIFICALLY
ADVANCED
INTERIORS

SPECIAL APPLICATION HOOD



F-400 Gen-5 Isotope Bench Hood

F-400 Isolator Gen-5 Isotope Fume Hood - Vertical Sash

ISOLATOR Gen-5 Isotope Bench Fume Hood - This special purpose fume hood is designed to meet most laboratory Constant Air Volume (CAV) or Variable Air Volume (VAV) requirements and supplied with and automatic compensating upper by-pass. For VAV, use option MOD-0004 for a restricted by-pass position of observation glass. Designed to mount on a 31" deep counter top. The ISOLATOR GENERATION-5 isotope fume hood with a frameless vertical sash, designed for use with radioisotope or biological work, features a type 304 stainless steel liner and baffles with coving on all containment chamber corners to facilitate cleaning. The integral work surface is reinforced to carry up to 200 lbs./sq. ft. of lead shielding or other overburden. The ISOLATOR Gen-5 Isotope bench mounted fume hood is supplied with the following standard features:

Counter Balance Systems - Chain and sprocket system delivers the easiest and most reliable sash operation available with an exceptional product life-cycle ISOLATOR drive system provides economical and reliable operation; tested to over 1 million cycles with no failure.

Sash Design - 1/4" thick tempered safety glass is provided with a stainless steel handle. Optional laminated safety glass for special applications. Hood has a frameless vertical sash with a 42" exterior sightline.

Lower Airfoil - Aerodynamic flush sill design allows air to enter the fume hood even when the sash is closed ensuring efficient fume exhaust. The flip up safety trough cover allows electrical wiring or tubing into the fume hood while still permitting full closure of the sash.

Stainless Steel Type 304 Exhaust Collar - Round collar which allows for direct connection to typical exhaust ducts to reduce duct transition costs, minimize static pressure losses and exhaust noise levels.

Electrical - Two UL/CSA approved duplex receptacles provided for 120 volt service, one on each corner post. UL/CSA approved LED light fixture and switch provided. Explosion proof fixtures are available options.

Plumbing - Both corner posts are pre-punched to accept a maximum of five plumbing fittings per post. Factory pre-plumbing is available as well as plumbing fixtures from a variety of manufacturers to meet most plumbing needs.

Access Panels - Interior overlay style access panels provide convenient access and prevent accidental removal. Exterior side panels are also removable for ease of access to plumbing and electrical service fixtures.

Standards - UL 1805 Classified and tested in accordance with ASHRAE 110. Test results available upon request.

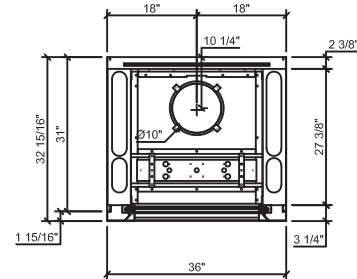
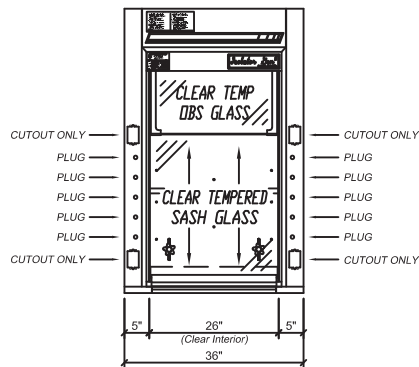


Rendering shown with optional features

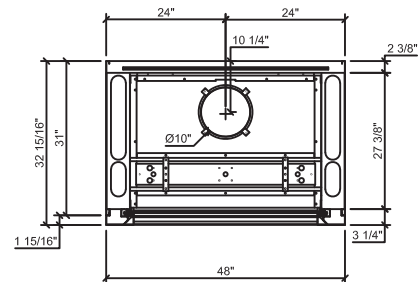
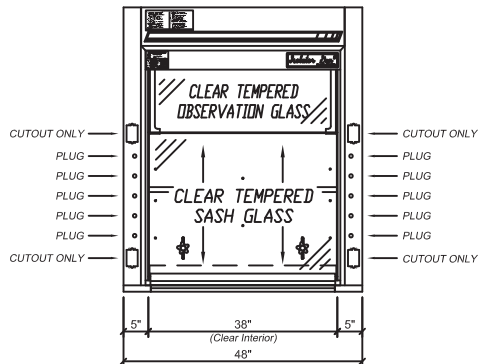
Catalog Number	Width	Clear Interior Depth	Duct Diameter	28" Open @ 100 FPM	18" Open @ 100 FPM
F-400-36G5	36"	24"	1:10"	506 CFM @ .14" SP	325 CFM @ .06" SP
F-400-48G5	48"	24"	1:10"	739 CFM @ .29" SP	475 CFM @ .12" SP
F-400-60G5	60"	24"	1:12"	972 CFM @ .27" SP	625 CFM @ .11" SP
F-400-72G5	72"	24"	1:12"	1206 CFM @ .42" SP	775 CFM @ .17" SP
F-400-96G5	96"	24"	2:10"	1672 CFM @ .37" SP	1075 CFM @ .15" SP

F-400 Gen-5 Isotope Bench Hood

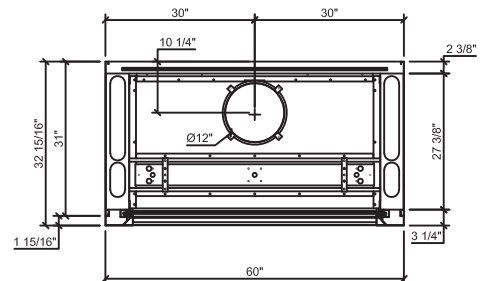
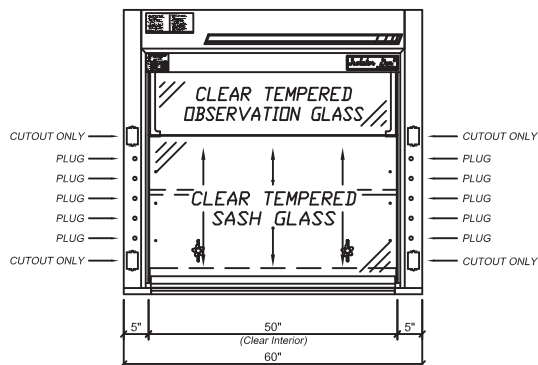
F-400-36G5 - 36" Wide



F-400-48G5 - 48" Wide

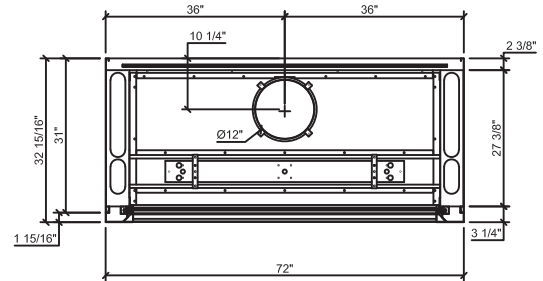
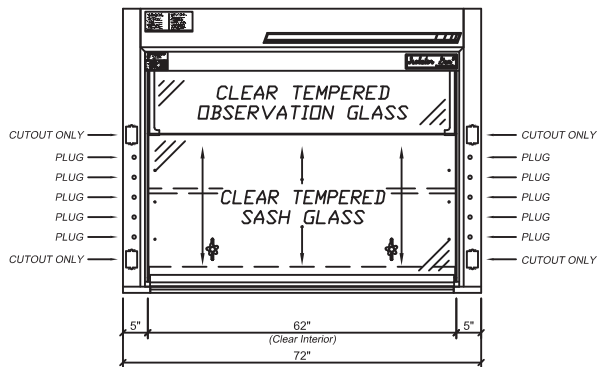


F-400-60G5 - 60" Wide

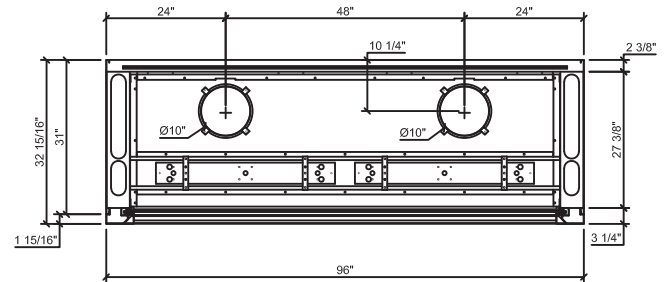
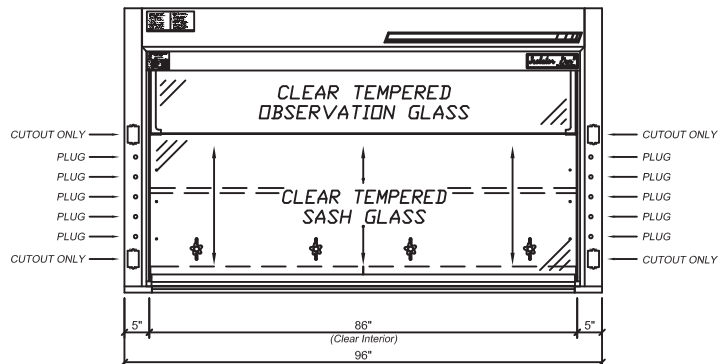


F-400 Gen-5 Isotope Bench Hood

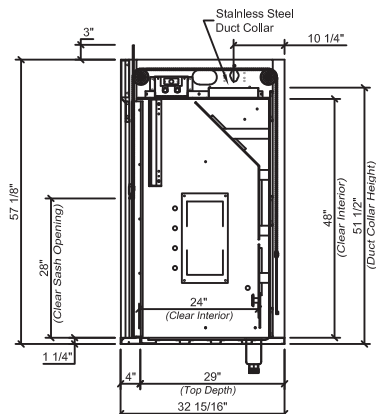
F-400-72G5 - 72" Wide



F-400-96G5 - 96" Wide



Section - Standard Depth



F-401 Gen-5 Isotope Bench Hood

F-401 Isolator Gen-5 Isotope Fume Hood - Combination Sash

ISOLATOR Gen-5 Isotope Bench Fume Hood - This special purpose fume hood is designed to meet most laboratory Constant Air Volume (CAV) or Variable Air Volume (VAV) requirements and supplied with and automatic compensating upper by-pass. For VAV, use option MOD-0004 for a restricted by-pass position of observation glass. Designed to mount on a 31" deep counter top. The ISOLATOR GENERATION-5 isotope fume hood with a combination vertical sash, designed for use with radioisotope or biological work, features a type 304 stainless steel liner and baffles with coving on all containment chamber corners to facilitate cleaning. The integral work surface is reinforced to carry up to 200 lbs./sq. ft. of lead shielding or other overburden. The ISOLATOR Gen-5 Isotope bench mounted fume hood is supplied with the following standard features:

Counter Balance Systems - Chain and sprocket system delivers the easiest and most reliable sash operation available with an exceptional product life-cycle ISOLATOR drive system provides economical and reliable operation; tested to over 1 million cycles with no failure.

Sash Design - 1/4" thick tempered safety panels are provided with a stainless steel sash frame. Optional laminated safety glass for special applications. Hood has a framed vertical sash and horizontal panels with a 42" exterior sightline.

Lower Airfoil - Aerodynamic flush sill design allows air to enter the fume hood even when the sash is closed ensuring efficient fume exhaust. The flip up safety trough cover allows electrical wiring or tubing into the fume hood while still permitting full closure of the sash.

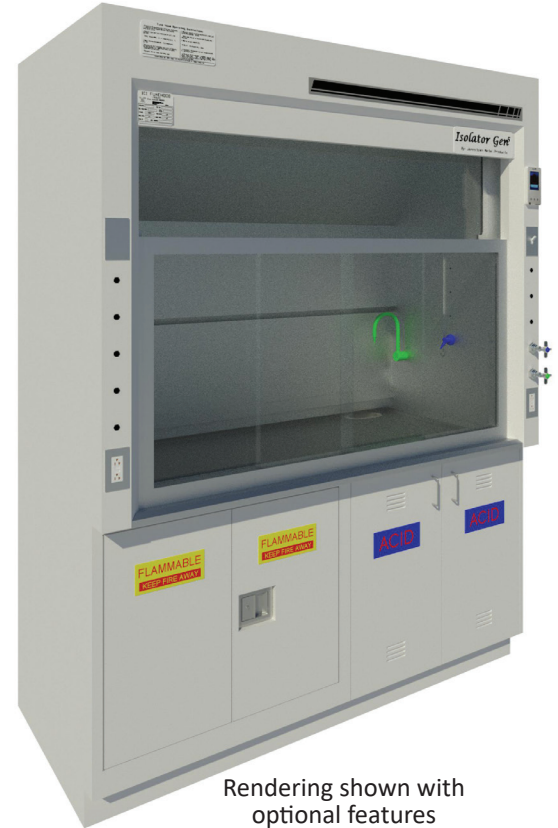
Stainless Steel Type 304 Exhaust Collar - Round collar which allows for direct connection to typical exhaust ducts to reduce duct transition costs, minimize static pressure losses and exhaust noise levels.

Electrical - Two UL/CSA approved duplex receptacles provided for 120 volt service, one on each corner post. UL/CSA approved LED light fixture and switch provided. Explosion proof fixtures are available options.

Plumbing - Both corner posts are pre-punched to accept a maximum of five plumbing fittings per post. Factory pre-plumbing is available as well as plumbing fixtures from a variety of manufacturers to meet most plumbing needs.

Access Panels - Interior overlay style access panels provide convenient access and prevent accidental removal. Exterior side panels are also removable for ease of access to plumbing and electrical service fixtures.

Standards - UL 1805 Classified and tested in accordance with ASHRAE 110. Test results available upon request.



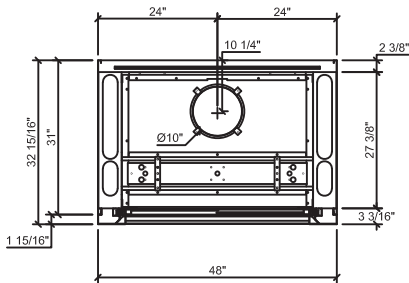
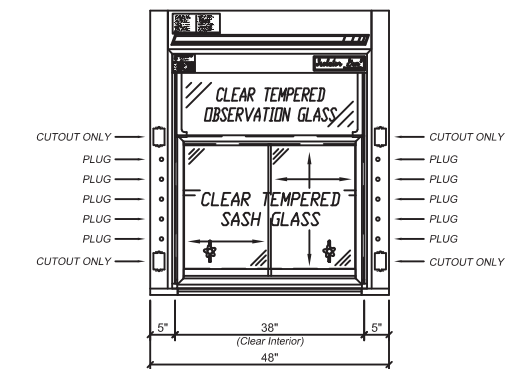
Rendering shown with optional features

Catalog Number	Width	Clear Interior Depth	Duct Diameter	28" Vertical Open @ 100 FPM	18" Vertical Open @ 100 FPM	50% Open @ 100 FPM
F-401-48G5	48"	24"	1:10"	739 CFM @ .29" SP	475 CFM @ .12" SP	415 CFM @ .09" SP
F-401-60G5	60"	24"	1:12"	972 CFM @ .27" SP	625 CFM @ .11" SP	549 CFM @ .09" SP
F-401-72G5	72"	24"	1:12"	1206 CFM @ .42" SP	775 CFM @ .17" SP	692 CFM @ .14" SP
F-401-96G5	96"	24"	2:10"	1672 CFM @ .37" SP	1075 CFM @ .15" SP	968 CFM @ .12" SP

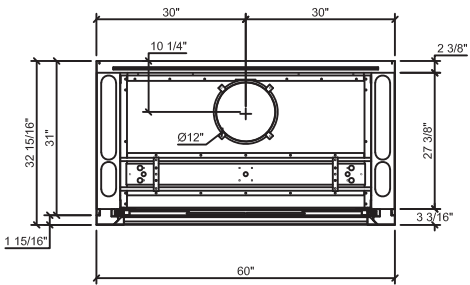
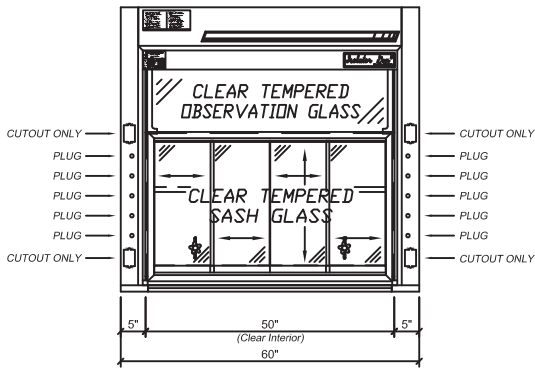
50% open may be achieved two ways: 1. vertical sash open 14", horizontal panels closed or 2. vertical sash closed, horizontal panels full open

F-401 Gen-5 Isotope Bench Hood

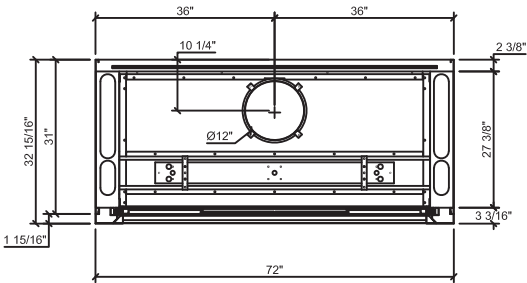
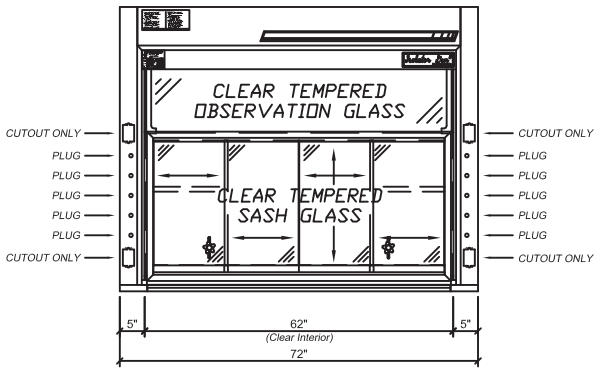
F-401-48G5 - 48" Wide



F-401-60G5 - 60" Wide

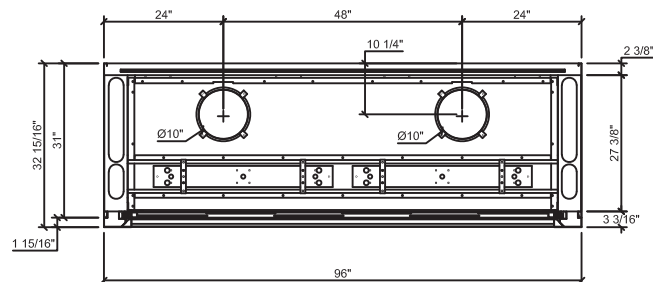
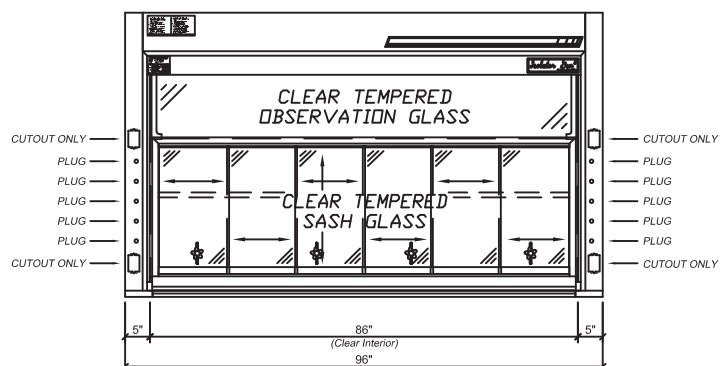


F-401-72G5 - 72" Wide

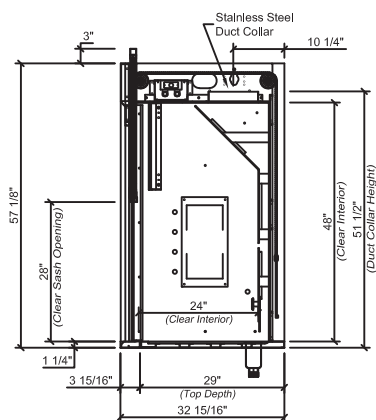


F-401 Gen-5 Isotope Bench Hood

F-401-96G5 - 96" Wide



Section - Standard Depth



F-403 Gen-5 Isotope Bench Hood

F-403 Isolator Gen-5 Isotope Fume Hood - Framed Vertical Sash

ISOLATOR Gen-5 Isotope Bench Fume Hood - This special purpose fume hood is designed to meet most laboratory Constant Air Volume (CAV) or Variable Air Volume (VAV) requirements and supplied with and automatic compensating upper by-pass. For VAV, use option MOD-0004 for a restricted by-pass position of observation glass. Designed to mount on a 31" deep counter top. The ISOLATOR GENERATION-5 isotope fume hood with a frameless vertical sash, designed for use with radioisotope or biological work, features a type 304 stainless steel liner and baffles with coving on all containment chamber corners to facilitate cleaning. The integral work surface is reinforced to carry up to 200 lbs./sq. ft. of lead shielding or other overburden. The ISOLATOR Gen-5 Isotope bench mounted fume hood is supplied with the following standard features:

Counter Balance Systems - Chain and sprocket system delivers the easiest and most reliable sash operation available with an exceptional product life-cycle ISOLATOR drive system provides economical and reliable operation; tested to over 1 million cycles with no failure.

Sash Design - 1/4" thick tempered safety glass is provided with a stainless steel frame. Optional laminated safety glass or polycarbonate available for special applications. Hood has a framed vertical sash with a 42" exterior sightline.

Lower Airfoil - Aerodynamic flush sill design allows air to enter the fume hood even when the sash is closed ensuring efficient fume exhaust. The flip up safety trough cover allows electrical wiring or tubing into the fume hood while still permitting full closure of the sash.

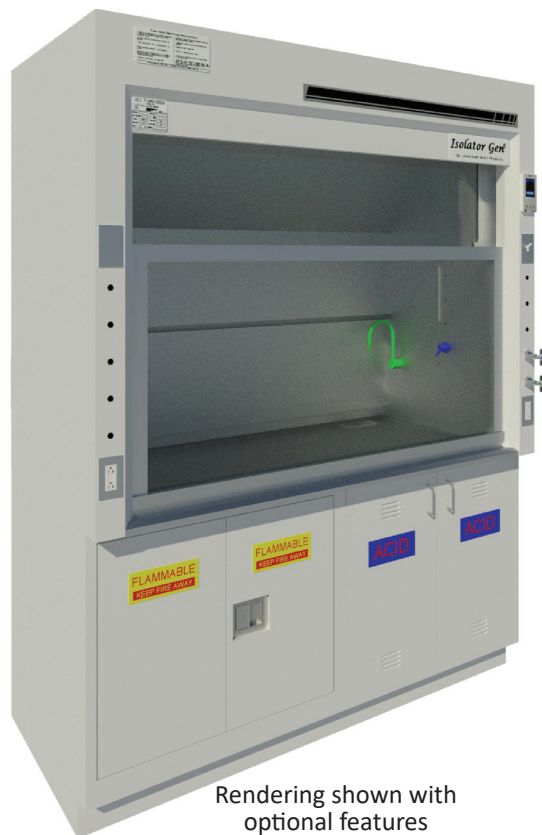
Stainless Steel Type 304 Exhaust Collar - Round collar which allows for direct connection to typical exhaust ducts to reduce duct transition costs, minimize static pressure losses and exhaust noise levels.

Electrical - Two UL/CSA approved duplex receptacles provided for 120 volt service, one on each corner post. UL/CSA approved LED light fixture and switch provided. Explosion proof fixtures are available options.

Plumbing - Both corner posts are pre-punched to accept a maximum of five plumbing fittings per post. Factory pre-plumbing is available as well as plumbing fixtures from a variety of manufacturers to meet most plumbing needs.

Access Panels - Interior overlay style access panels provide convenient access and prevent accidental removal. Exterior side panels are also removable for ease of access to plumbing and electrical service fixtures.

Standards - UL 1805 Classified and tested in accordance with ASHRAE 110. Test results available upon request.

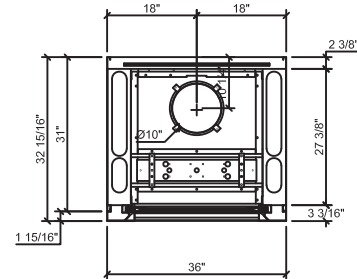
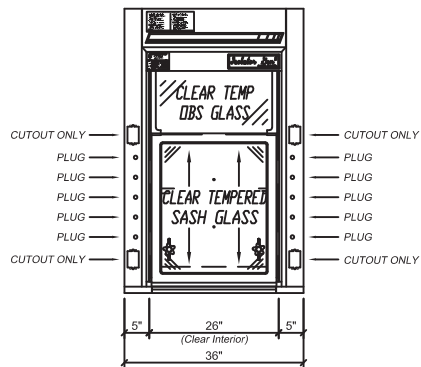


Rendering shown with optional features

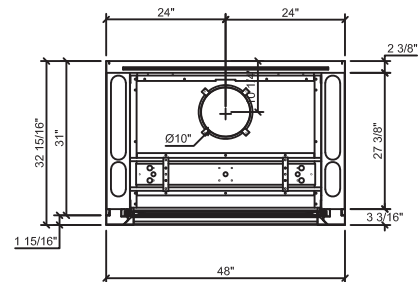
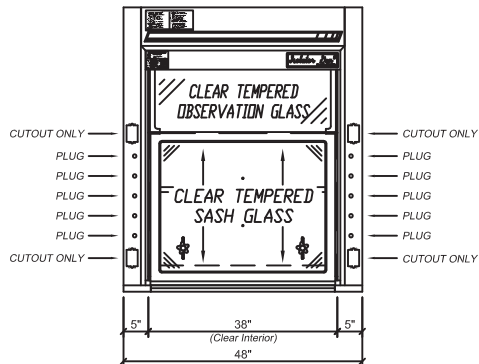
Catalog Number	Width	Clear Interior Depth	Duct Diameter	28" Open @ 100 FPM	18" Open @ 100 FPM
F-403-36G5	36"	24"	1:10"	506 CFM @ .14" SP	325 CFM @ .06" SP
F-403-48G5	48"	24"	1:10"	739 CFM @ .29" SP	475 CFM @ .12" SP
F-403-60G5	60"	24"	1:12"	972 CFM @ .27" SP	625 CFM @ .11" SP
F-403-72G5	72"	24"	1:12"	1206 CFM @ .42" SP	775 CFM @ .17" SP
F-403-96G5	96"	24"	2:12"	1672 CFM @ .37" SP	1075 CFM @ .15" SP

F-403 Gen-5 Isotope Bench Hood

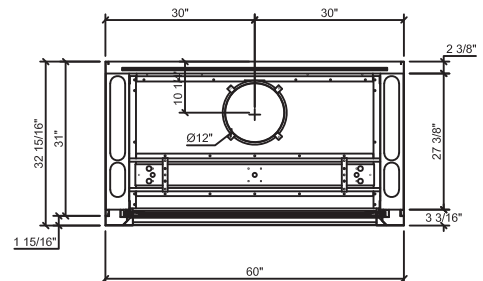
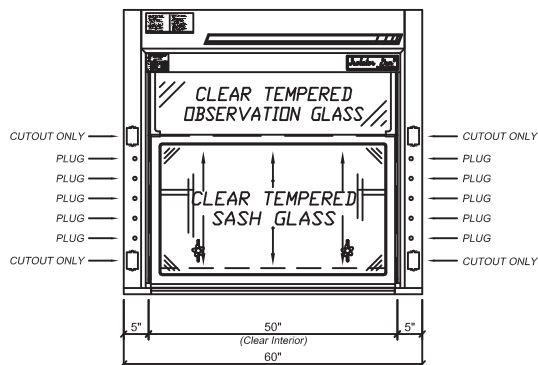
F-403-36G5 - 36" Wide



F-403-48G5 - 48" Wide



F-403-60G5 - 60" Wide



F-500 Gen-5 Perchloric Acid Bench Hood

F-500 Isolator Gen-5 Perchloric Acid Fume Hood - Frameless Vertical Sash

ISOLATOR Gen-5 Perchloric Bench Fume Hood - This special purpose fume hood is designed to meet most laboratory Constant Air Volume (CAV) or Variable Air Volume (VAV) requirements and supplied with and automatic compensating upper by-pass. For VAV, use option MOD-0004 for a restricted by-pass position of observation glass. Designed to mount on a 31" deep counter top. The ISOLATOR perchloric acid fume hood with a frameless vertical sash features a type 316 stainless steel liner and baffles with coving on all containment chamber corners. Also included is a washdown system designed to carry away potentially explosive perchloric acid salts through a 4" to 5 3/4" sloped trench with a single drain. The ISOLATOR Gen-5 Perchloric bench mounted fume hood is supplied with the following standard features:

Counter Balance Systems - Chain and sprocket system delivers the easiest and most reliable sash operation available with an exceptional product life-cycle ISOLATOR drive system provides economical and reliable operation; tested to over 1 million cycles with no failure.

Sash Design - 1/4" thick tempered safety glass is provided with a stainless steel handle. Optional laminated safety glass available for special applications. Hood has a frameless vertical sash with a 42" exterior sightline.

Lower Airfoil - Aerodynamic flush sill design allows air to enter the fume hood even when the sash is closed ensuring efficient fume exhaust. The flip up safety trough cover allows electrical wiring or tubing into the fume hood while still permitting full closure of the sash.

Interior - Stainless Steel Type 316 Liner and integral type 316 stainless steel worktop with trench drain and washdown setup

Stainless Steel Type 316 Exhaust Collar - Round collar which allows for direct connection to typical exhaust ducts to reduce duct transition costs, minimize static pressure losses and exhaust noise levels.

Electrical - Two UL/CSA approved duplex receptacles provided for 120 volt service, one on each corner post. UL/CSA approved LED light fixture and switch provided. Explosion proof fixtures are available options.

Plumbing - Both corner posts are pre-punched to accept a maximum of five plumbing fittings per post. Factory pre-plumbing is available as well as plumbing fixtures from a variety of manufacturers to meet most plumbing needs. Includes integral chamber washdown system

Access Panels - Interior overlay style access panels provide convenient access and prevent accidental removal. Exterior side panels are also removable for ease of access to plumbing and electrical service fixtures.

Standards - UL 1805 Classified and tested in accordance with ASHRAE 110. Test results available upon request.



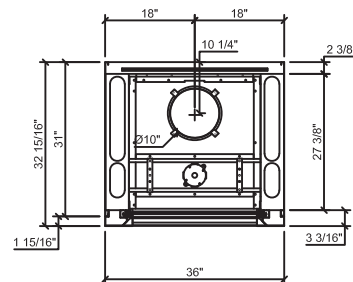
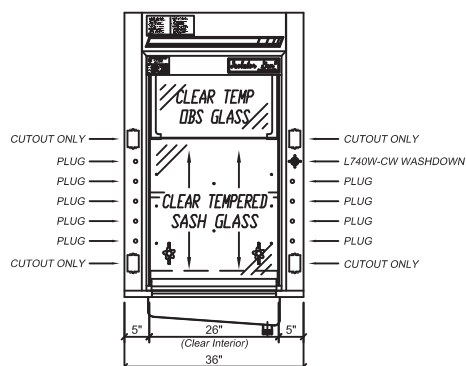
Rendering shown with optional features

Catalog Number	Width	Clear Interior Depth	Duct Diameter	28" Open @ 100 FPM	18" Open @ 100 FPM
F-500-36G5	36"	24"	1:10"	506 CFM @ .14" SP	325 CFM @ .06" SP
F-500-48G5	48"	24"	1:10"	739 CFM @ .29" SP	475 CFM @ .12" SP
F-500-60G5	60"	24"	1:12"	972 CFM @ .27" SP	625 CFM @ .11" SP
F-500-72G5	72"	24"	1:12"	1206 CFM @ .42" SP	775 CFM @ .17" SP
F-500-96G5	96"	24"	2:10"	1672 CFM @ .37" SP	1075 CFM @ .15" SP

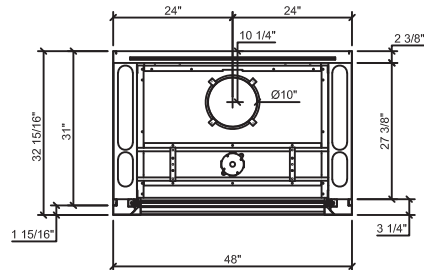
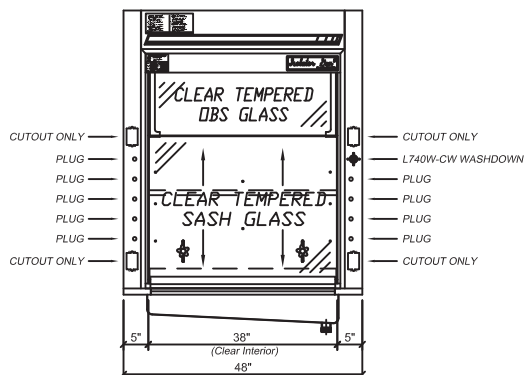
***SPECIAL NOTES:** Perchloric hoods attached to long runs of ductwork require solenoid activated, electronically sequenced spray head activation to assure the flow rate into the fume hood washdown trench never exceeds the 45 GPM overflow rate. Any blower purchased to exhaust this hood should have internal washdown capability and be lubricated with fluorocarbon grease and oil.

F-500 Gen-5 Perchloric Acid Bench Hood

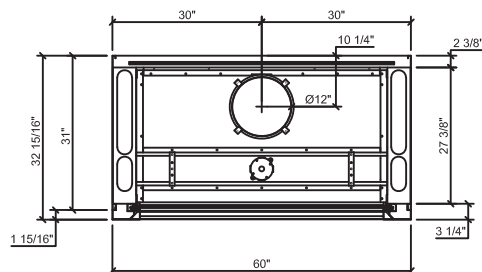
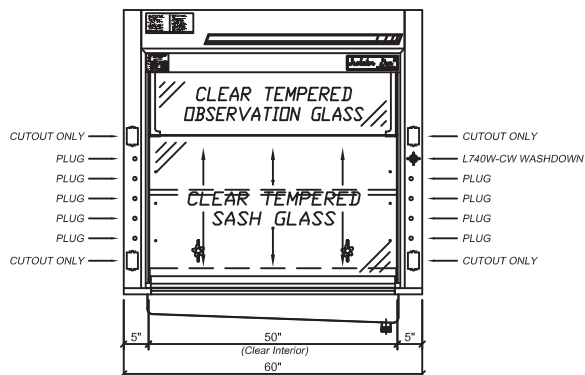
F-500-36G5 - 36" Wide



F-500-48G5 - 48" Wide

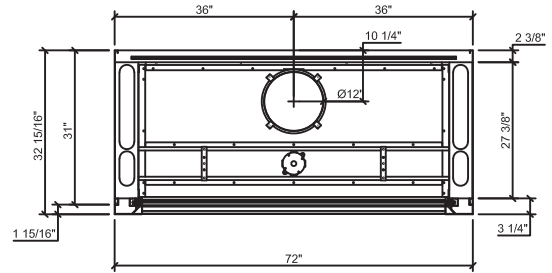
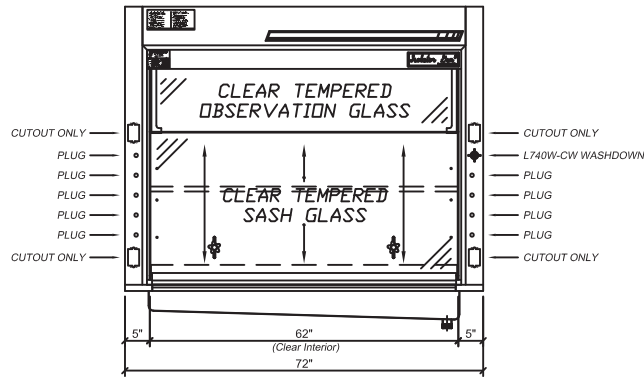


F-500-60G5 - 60" Wide

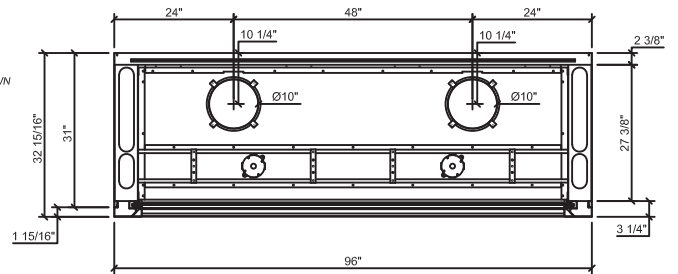
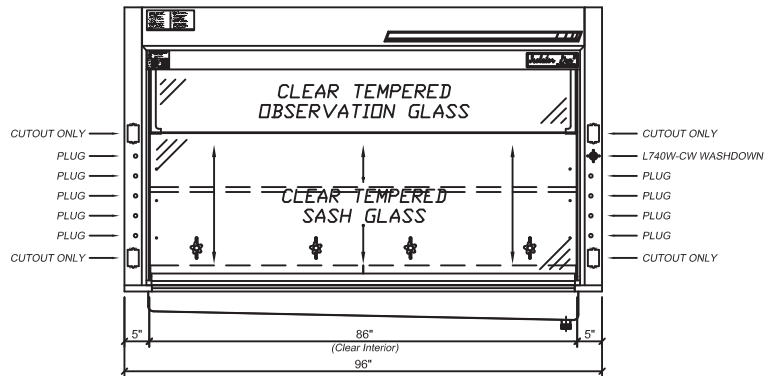


F-500 Gen-5 Perchloric Acid Bench Hood

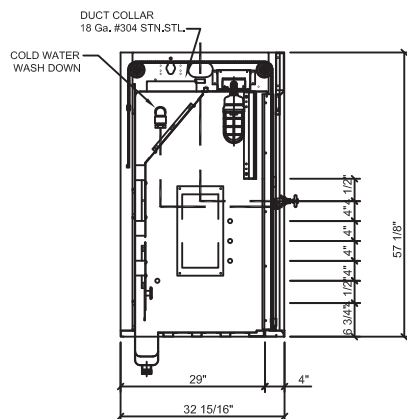
F-500-72G5 - 72" Wide



F-500-96G5 - 96" Wide



Section - Standard Depth



F-503 Gen-5 Perchloric Acid Bench Hood

F-503 Isolator Gen-5 Perchloric Acid Fume Hood - Framed Vertical Sash

ISOLATOR Gen-5 Perchloric Bench Fume Hood - This special purpose fume hood is designed to meet most laboratory Constant Air Volume (CAV) or Variable Air Volume (VAV) requirements and supplied with and automatic compensating upper by-pass. For VAV, use option MOD-0004 for a restricted by-pass position of observation glass. Designed to mount on a 31" deep counter top. The ISOLATOR perchloric acid fume hood with a frameless vertical sash features a type 316 stainless steel liner and baffles with coving on all containment chamber corners. Also included is a washdown system designed to carry away potentially explosive perchloric acid salts through a 4" to 5 3/4" sloped trench with a single drain. The ISOLATOR Gen-5 Perchloric bench mounted fume hood is supplied with the following standard features:

Counter Balance Systems - Chain and sprocket system delivers the easiest and most reliable sash operation available with an exceptional product life-cycle ISOLATOR drive system provides economical and reliable operation; tested to over 1 million cycles with no failure.

Sash Design - 1/4" thick tempered safety glass is provided with a stainless steel frame. Optional laminated safety glass available for special applications. Hood has a framed vertical sash with a 42" exterior sightline.

Lower Airfoil - Aerodynamic flush sill design allows air to enter the fume hood even when the sash is closed ensuring efficient fume exhaust. The flip up safety trough cover allows electrical wiring or tubing into the fume hood while still permitting full closure of the sash.

Interior - Stainless Steel Type 316 Liner and integral type 316 stainless steel worktop with trench drain and washdown setup

Stainless Steel Type 316 Exhaust Collar - Round collar which allows for direct connection to typical exhaust ducts to reduce duct transition costs, minimize static pressure losses and exhaust noise levels.

Electrical - Two UL/CSA approved duplex receptacles provided for 120 volt service, one on each corner post. UL/CSA approved LED light fixture and switch provided. Explosion proof fixtures are available options.

Plumbing - Both corner posts are pre-punched to accept a maximum of five plumbing fittings per post. Factory pre-plumbing is available as well as plumbing fixtures from a variety of manufacturers to meet most plumbing needs. Includes integral chamber washdown system.

Access Panels - Interior overlay style access panels provide convenient access and prevent accidental removal. Exterior side panels are also removable for ease of access to plumbing and electrical service fixtures.

Standards - UL 1805 Classified and tested in accordance with ASHRAE 110. Test results available upon request.



Catalog Number	Width	Clear Interior Depth	Duct Diameter	28" Open @ 100 FPM	18" Open @ 100 FPM
F-503-36G5	36"	24"	1:10"	506 CFM @ .14" SP	325 CFM @ .06" SP
F-503-48G5	48"	24"	1:10"	739 CFM @ .29" SP	475 CFM @ .12" SP
F-503-60G5	60"	24"	1:12"	972 CFM @ .27" SP	625 CFM @ .11" SP
F-503-72G5	72"	24"	1:12"	1206 CFM @ .42" SP	775 CFM @ .17" SP
F-503-96G5	96"	24"	2:10"	1672 CFM @ .37" SP	1075 CFM @ .15" SP

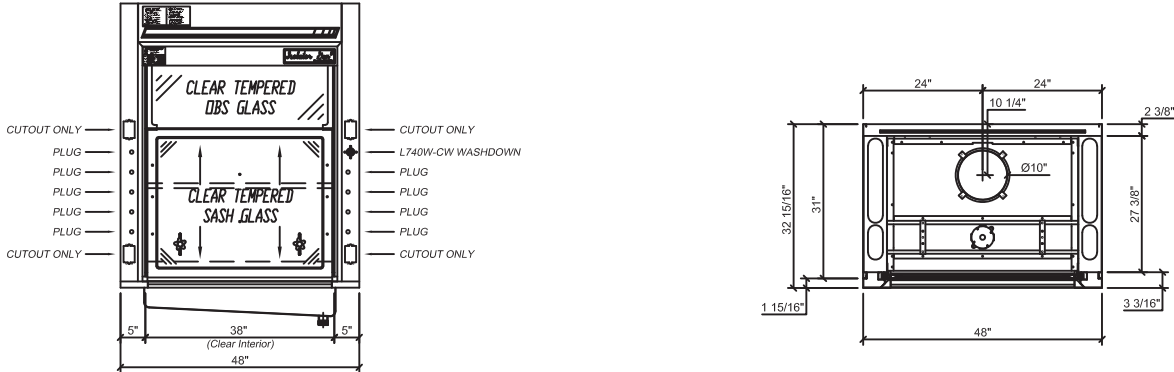
***SPECIAL NOTES:** Perchloric hoods attached to long runs of ductwork require solenoid activated, electronically sequenced spray head activation to assure the flow rate into the fume hood washdown trench never exceeds the 45 GPM overflow rate. Any blower purchased to exhaust this hood should have internal washdown capability and be lubricated with fluorocarbon grease and oil.

F-503 Gen-5 Perchloric Acid Bench Hood

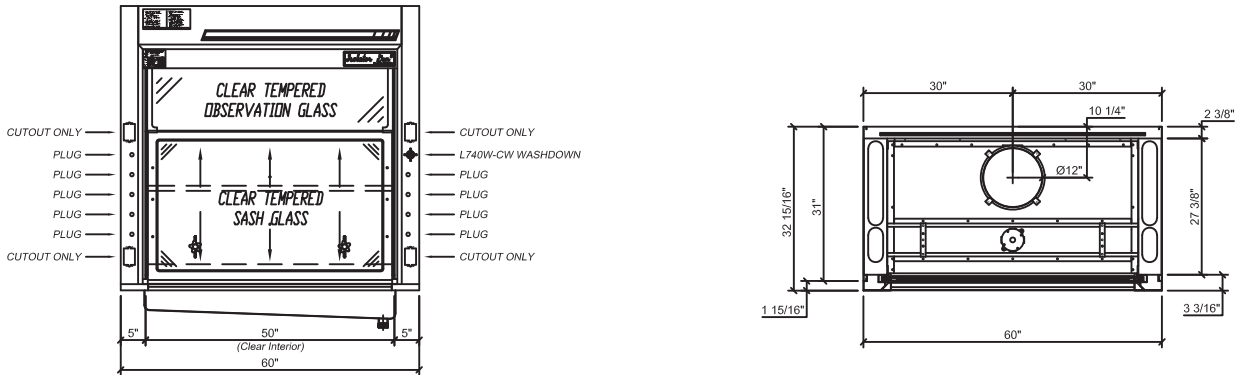
F-503-36G5 - 36" Wide



F-503-48G5 - 48" Wide



F-503-60G5 - 60" Wide



F-600 Gen-5 OS Height Bench Hood

F-600 Isolator Gen-5 OS Height Fume Hood - Frameless Vertical Sash

ISOLATOR Gen-5 OS Height Bench Fume Hood - This general purpose fume hood is designed to meet most laboratory Constant Air Volume (CAV) or Variable Air Volume (VAV) requirements and supplied with and automatic compensating upper by-pass. For VAV, use option MOD-0004 for a restricted by-pass position of observation glass. Designed to mount on a 31" deep counter top. The ISOLATOR Gen-5 bench mounted fume hood is supplied with the following standard features:

Counter Balance Systems - Chain and sprocket system delivers the easiest and most reliable sash operation available with an exceptional product life-cycle ISOLATOR drive system provides economical and reliable operation; tested to over 1 million cycles with no failure.

Interior Height - Interior height of 60", as opposed to the standard bench interior height of 48", to accommodate taller apparatus.

Sash Design - 1/4" thick tempered safety glass is provided with an epoxy urethane coated steel handle. Optional laminated safety glass or polycarbonate available for special applications. Hood has a frameless vertical sash with a 54" exterior sightline.

Lower Airfoil - Aerodynamic flush sill design allows air to enter the fume hood even when the sash is closed ensuring efficient fume exhaust. The flip up safety trough cover allows electrical wiring or tubing into the fume hood while still permitting full closure of the sash.

Stainless Steel Type 304 Exhaust Collar - Round collar which allows for direct connection to typical exhaust ducts to reduce duct transition costs, minimize static pressure losses and exhaust noise levels.

Electrical - Two UL/CSA approved duplex receptacles provided for 120 volt service, one on each corner post. UL/CSA approved LED light fixture and switch provided. Explosion proof fixtures are available options.

Plumbing - Both corner posts are pre-punched to accept a maximum of five plumbing fittings per post. Factory pre-plumbing is available as well as plumbing fixtures from a variety of manufacturers to meet most plumbing needs.

Access Panels - Interior overlay style access panels provide convenient access and prevent accidental removal. Exterior side panels are also removable for ease of access to plumbing and electrical service fixtures.

Standards - UL 1805 Classified and tested in accordance with ASHRAE 110. Test results available upon request.

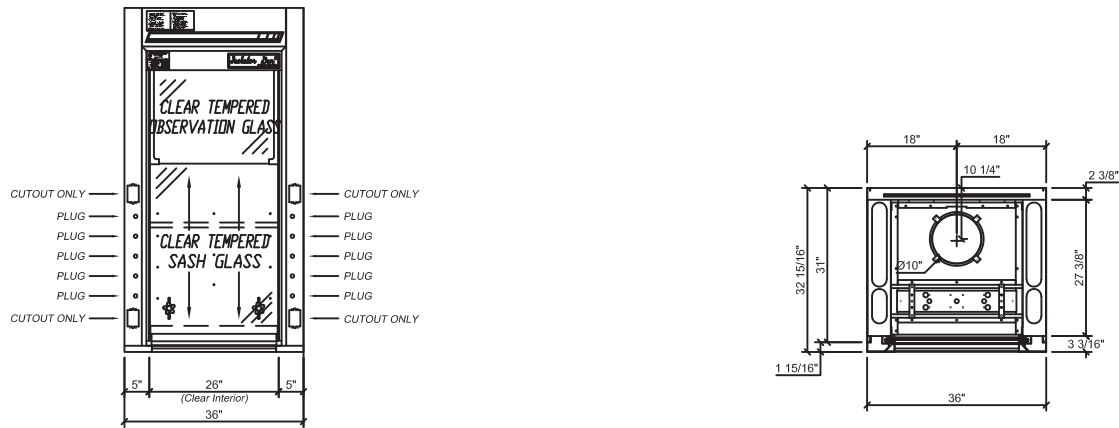


Rendering shown with optional features

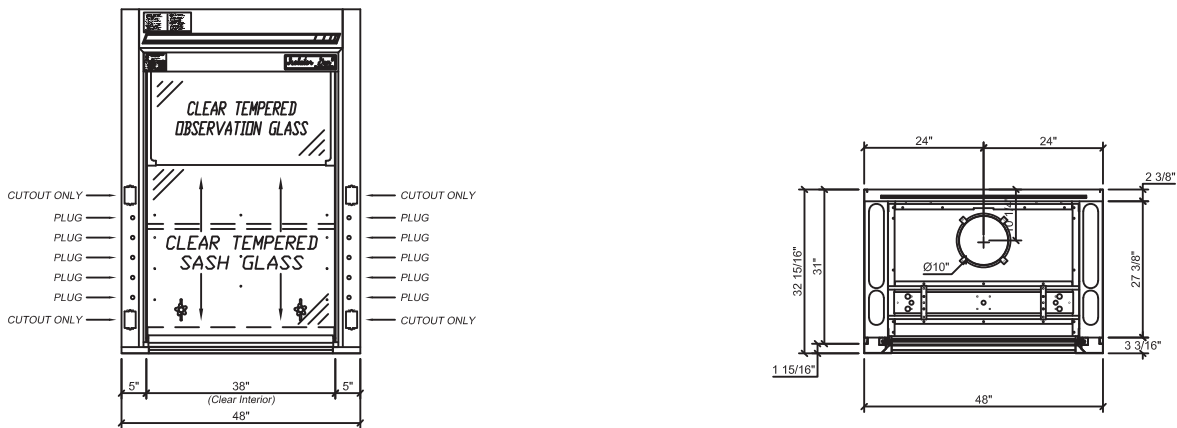
Catalog Number	Width	Clear Interior Depth	Duct Diameter	34" Open @ 100 FPM	18" Open @ 100 FPM
F-600-36	36"	24"	1:10"	614 CFM @ .20" SP	325 CFM @ .06" SP
F-600-36D30	36"	30"	1:10"	614 CFM @ .20" SP	325 CFM @ .06" SP
F-600-48	48"	24"	1:10"	897 CFM @ .43" SP	475 CFM @ .12" SP
F-600-48D30	48"	30"	1:10"	897 CFM @ .43" SP	475 CFM @ .12" SP
F-600-60	60"	24"	1:12"	1181 CFM @ .40" SP	625 CFM @ .11" SP
F-600-60D30	60"	30"	1:12"	1181 CFM @ .40" SP	625 CFM @ .11" SP
F-600-72	72"	24"	1:12"	1464 CFM @ .62" SP	775 CFM @ .17" SP
F-600-72D30	72"	30"	1:12"	1464 CFM @ .62" SP	775 CFM @ .17" SP
F-600-96	96"	24"	2:10"	2031 CFM @ .55" SP	1075 CFM @ .08" SP
F-600-96D30	96"	30"	2:10"	2031 CFM @ .55" SP	1075 CFM @ .08" SP

F-600 Gen-5 OS Height Bench Hood

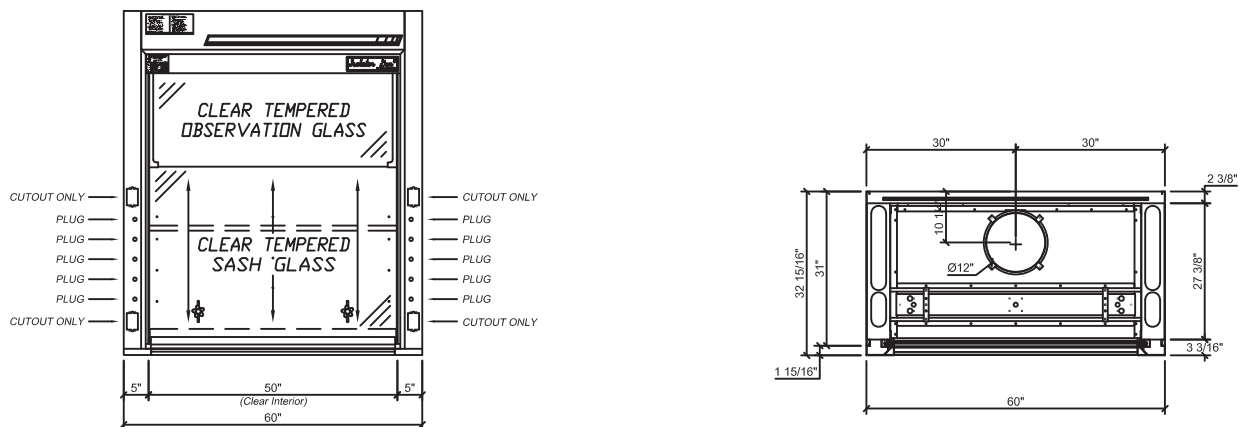
F-600-36G5 - 36" Wide



F-600-48G5 - 48" Wide

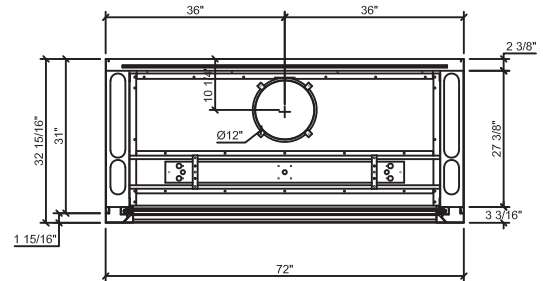
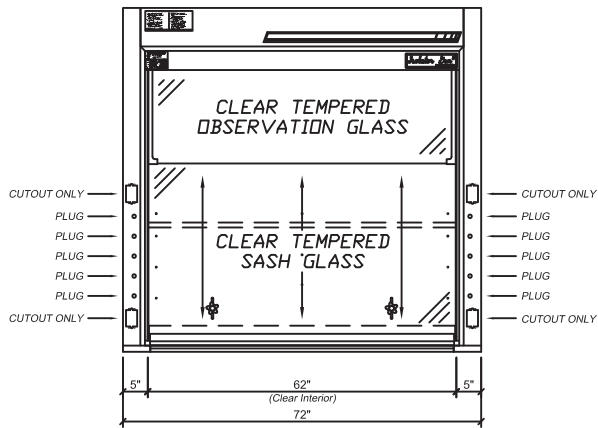


F-600-60G5 - 60" Wide

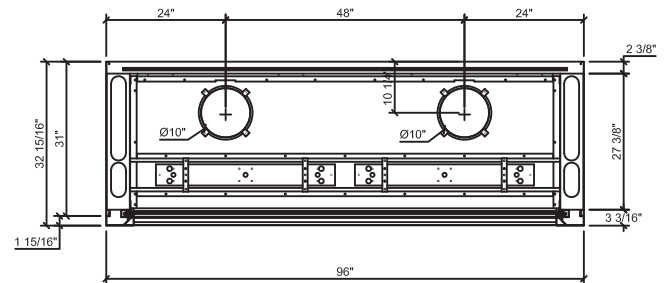
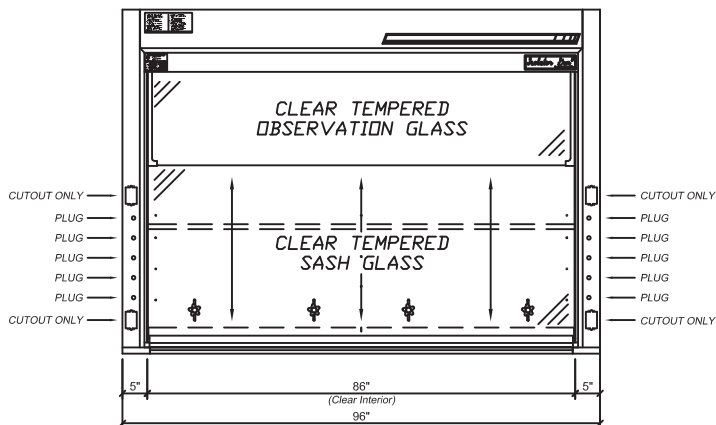


F-600 Gen-5 OS Height Bench Hood

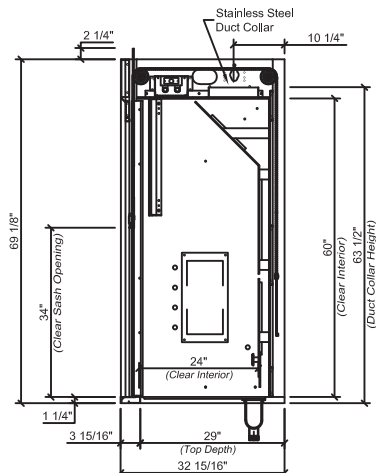
F-600-72G5 - 72" Wide



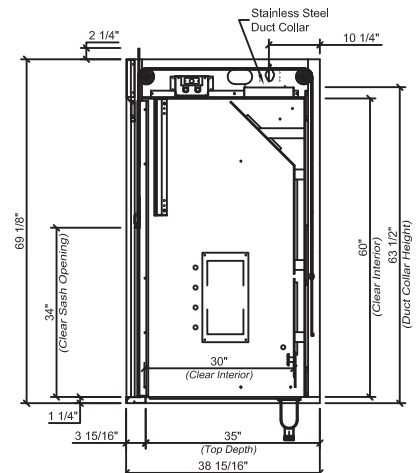
F-600-96G5 - 96" Wide



Section - Standard Depth



Section - 30" Deep



F-601 Gen-5 OS Height Bench Hood

F-601 Isolator Gen-5 OS Height Fume Hood - Combination Sash

ISOLATOR Gen-5 OS Height Bench Fume Hood - This general purpose fume hood is designed to meet most laboratory Constant Air Volume (CAV) or Variable Air Volume (VAV) requirements and supplied with and automatic compensating upper by-pass. For VAV, use option MOD-0004 for a restricted by-pass position of observation glass. Designed to mount on a 31" deep counter top. The ISOLATOR Gen-5 bench mounted fume hood is supplied with the following standard features:

Counter Balance Systems - Chain and sprocket system delivers the easiest and most reliable sash operation available with an exceptional product life-cycle ISOLATOR drive system provides economical and reliable operation; tested to over 1 million cycles with no failure.

Interior Height - Interior height of 60", as opposed to the standard bench interior height of 48", to accommodate taller apparatus.

Sash Design - 1/4" thick tempered safety panels are provided with a stainless steel sash frame. Optional laminated safety glass or polycarbonate available for special applications. Hood has a framed vertical sash and horizontal panels with a 54" exterior sightline.

Lower Airfoil - Aerodynamic flush sill design allows air to enter the fume hood even when the sash is closed ensuring efficient fume exhaust. The flip up safety trough cover allows electrical wiring or tubing into the fume hood while still permitting full closure of the sash.

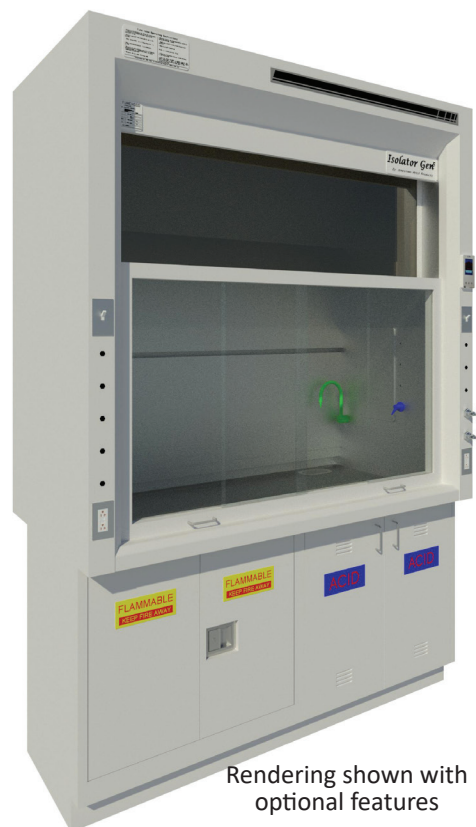
Stainless Steel Type 304 Exhaust Collar - Round collar which allows for direct connection to typical exhaust ducts to reduce duct transition costs, minimize static pressure losses and exhaust noise levels.

Electrical - Two UL/CSA approved duplex receptacles provided for 120 volt service, one on each corner post. UL/CSA approved LED light fixture and switch provided. Explosion proof fixtures are available options.

Plumbing - Both corner posts are pre-punched to accept a maximum of five plumbing fittings per post. Factory pre-plumbing is available as well as plumbing fixtures from a variety of manufacturers to meet most plumbing needs.

Access Panels - Interior overlay style access panels provide convenient access and prevent accidental removal. Exterior side panels are also removable for ease of access to plumbing and electrical service fixtures.

Standards - UL 1805 Classified and tested in accordance with ASHRAE 110. Test results available upon request.



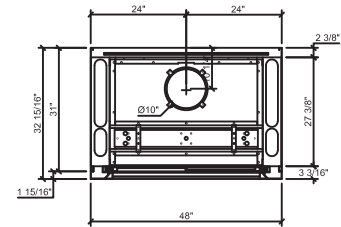
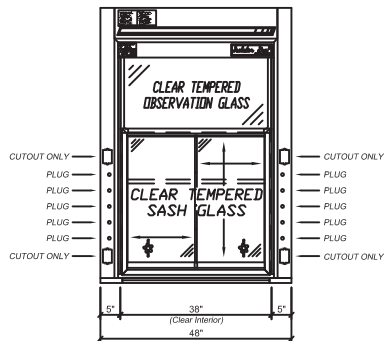
Rendering shown with optional features

Catalog Number	Width	Clear Interior Depth	Duct Diameter	34" Open @ 100 FPM	18" Open @ 100 FPM	50% Horizontal Open @ 100 FPM
F-601-48	48"	24"	1:10"	897 CFM @ .43" SP	475 CFM @ .12" SP	486 CFM @ .13" SP
F-601-48D30	48"	30"	1:10"	897 CFM @ .43" SP	475 CFM @ .12" SP	486 CFM @ .13" SP
F-601-60	60"	24"	1:12"	1181 CFM @ .40" SP	625 CFM @ .11" SP	643 CFM @ .12" SP
F-601-60D30	60"	30"	1:12"	1181 CFM @ .40" SP	625 CFM @ .11" SP	643 CFM @ .12" SP
F-601-72	72"	24"	1:12"	1464 CFM @ .62" SP	775 CFM @ .17" SP	811 CFM @ .19" SP
F-601-72D30	72"	30"	1:12"	1464 CFM @ .62" SP	775 CFM @ .17" SP	811 CFM @ .19" SP
F-601-96	96"	24"	2:10"	2031 CFM @ .55" SP	1075 CFM @ .08" SP	1135 CFM @ .17" SP
F-601-96D30	96"	30"	2:10"	2031 CFM @ .55" SP	1075 CFM @ .08" SP	1135 CFM @ .17" SP

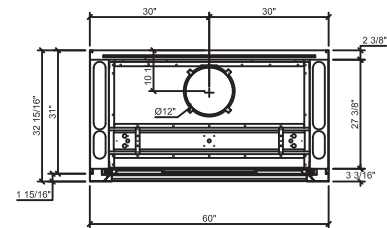
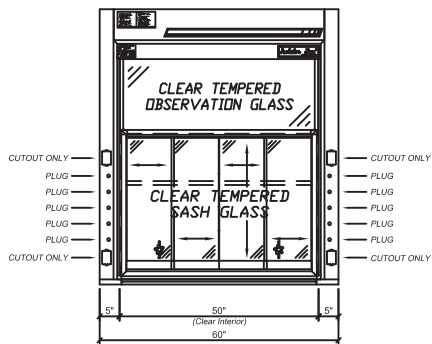
50% open may be achieved two ways: 1. vertical sash open 14", horizontal panels closed or 2. vertical sash closed, horizontal panels full open

F-601 Gen-5 OS Height Bench Hood

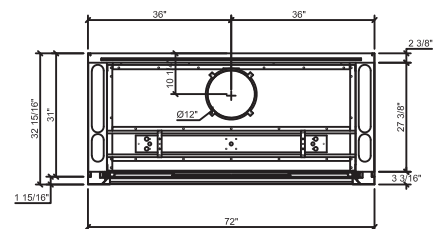
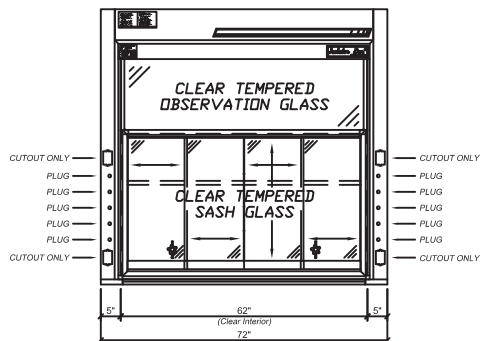
F-601-48G5 - 48" Wide



F-601-60G5 - 60" Wide

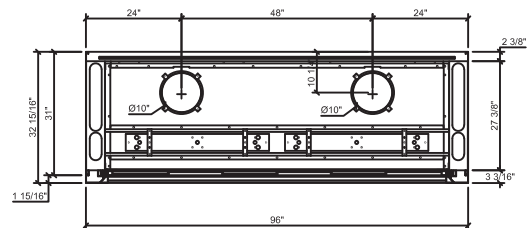
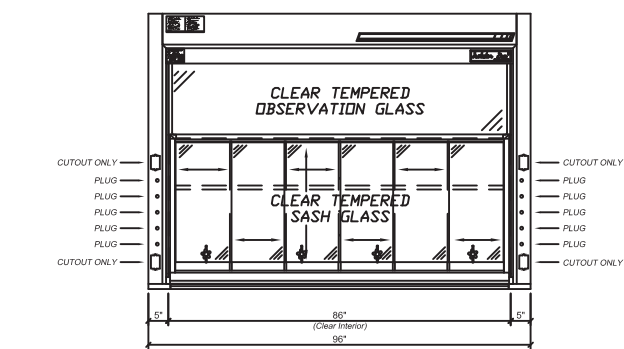


F-601-72G5 - 72" Wide

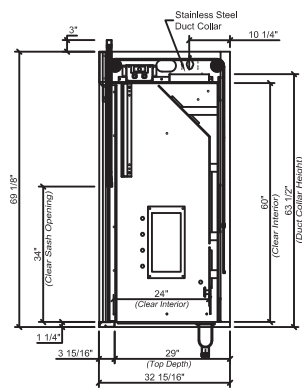


F-601 Gen-5 OS Height Bench Hood

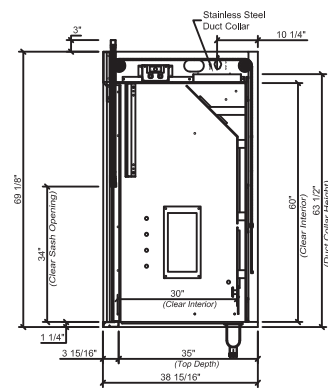
F-601-96G5 - 96" Wide



Section - Standard Depth



Section - 30" Deep



F-602 Gen-5 OS Height Bench Hood

F-602 Isolator Gen-5 OS Height Fume Hood - Horizontal Sash

ISOLATOR Gen-5 OS Height Bench Fume Hood - This general purpose fume hood is designed to meet most laboratory Constant Air Volume (CAV) or Variable Air Volume (VAV) requirements and supplied with and automatic compensating upper by-pass. For VAV, use option MOD-0004 for a restricted by-pass position of observation glass. Designed to mount on a 31" deep counter top. The ISOLATOR Gen-5 bench mounted fume hood is supplied with the following standard features:

Sash System – Top hung epoxy urethane coated framed horizontal sashes offer exceptional product life-cycle and minimize barriers.

Interior Height - Interior height of 60", as opposed to the standard bench interior height of 48", to accommodate taller apparatus.

Sash Design - 1/4" thick tempered safety glass is set in horizontal sliding epoxy urethane coated steel frames. Optional laminated safety glass or polycarbonate available for special applications. Hood has a horizontal only sash with a 54" exterior sightline.

Stainless Steel Type 304 Exhaust Collar - Round collar which allows for direct connection to typical exhaust ducts to reduce duct transition costs, minimize static pressure losses and exhaust noise levels.

Electrical - Two UL/CSA approved duplex receptacles provided for 120 volt service, one on each corner post. UL/CSA approved LED light fixture and switch provided. Explosion proof fixtures are available options.

Plumbing - Both corner posts are pre-punched to accept a maximum of five plumbing fittings per post. Factory pre-plumbing is available as well as plumbing fixtures from a variety of manufacturers to meet most plumbing needs.

Access Panels - Interior overlay style access panels provide convenient access and prevent accidental removal. Exterior side panels are also removable for ease of access to plumbing and electrical service fixtures.

Standards - UL 1805 Classified and tested in accordance with ASHRAE 110. Test results available upon request.



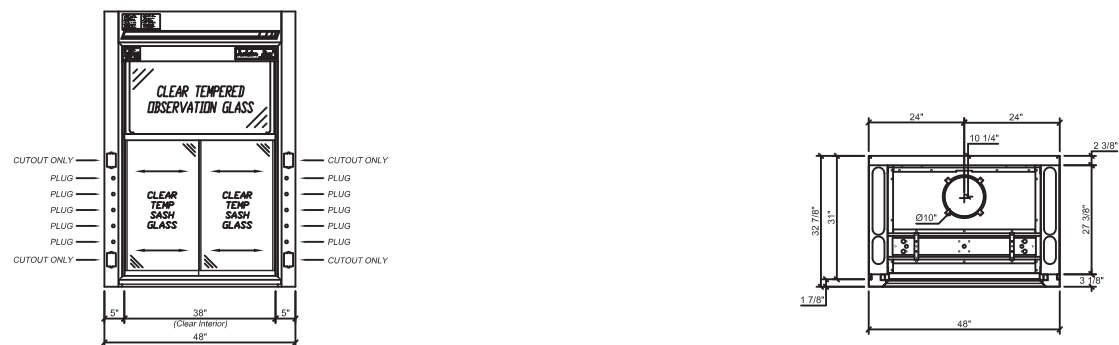
Rendering shown with optional features

Catalog Number	Width	Clear Interior Depth	Duct Diameter	34" Open @ 100 FPM	50% Open @ 100 FPM
F-602-48	48"	24"	1:10"	N/A	523 CFM @ .14" SP
F-602-48D30	48"	30"	1:10"	N/A	523 CFM @ .14" SP
F-602-60	60"	24"	1:12"	N/A	671 CFM @ .13" SP
F-602-60D30	60"	30"	1:12"	N/A	671 CFM @ .13" SP
F-602-72	72"	24"	1:12"	N/A	838 CFM @ .20" SP
F-602-72D30	72"	30"	1:12"	N/A	838 CFM @ .20" SP
F-602-96	96"	24"	2:10"	N/A	1154 CFM @ .18" SP
F-602-96D30	96"	30"	2:10"	N/A	1154 CFM @ .18" SP
F-602-120	120"	24"	2:12"	N/A	
F-602-120D30	120"	30"	2:12"	N/A	
F-602-144	144"	24"	2:12"	N/A	
F-602-144D30	144"	30"	2:12"	N/A	

50% open may be achieved two ways: 1. vertical sash open 14", horizontal panels closed or 2. vertical sash closed, horizontal panels full open

F-602 Gen-5 OS Height Bench Hood

F-602-48G5 - 48" Wide



F-602-60G5 - 60" Wide

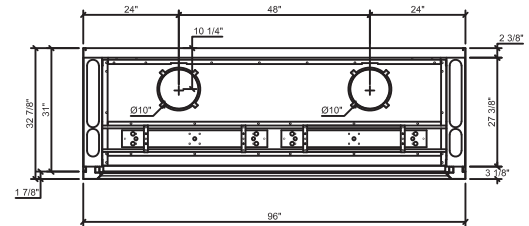
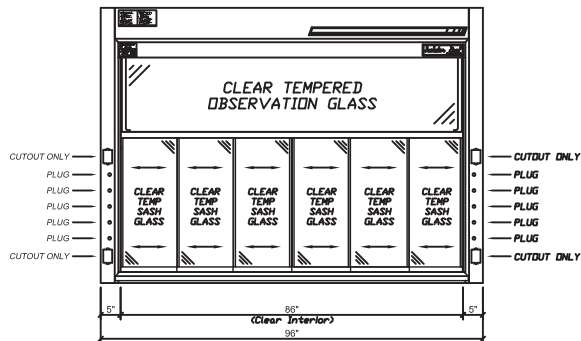


F-602-72G5 - 72" Wide

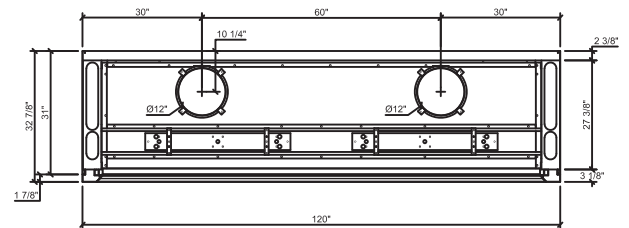
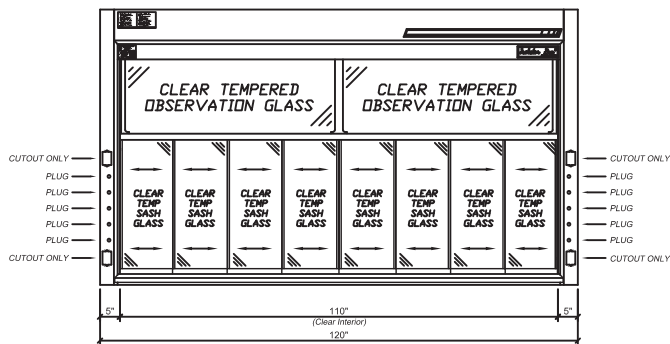


F-602 Gen-5 OS Height Bench Hood

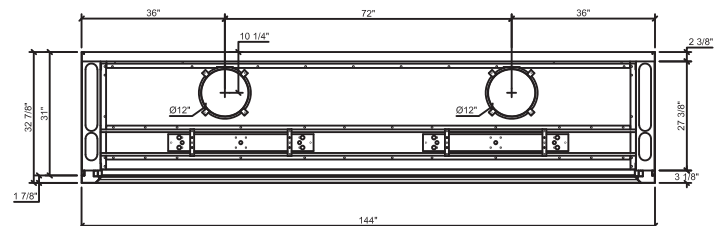
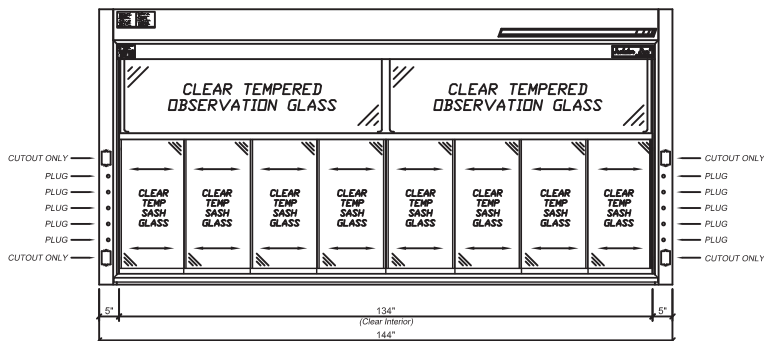
F-602-96G5 - 96" Wide



F-602-120G5 - 120" Wide

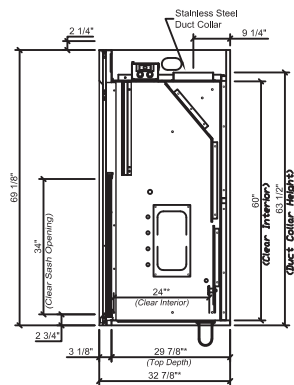


F-602-144G5 - 144" Wide

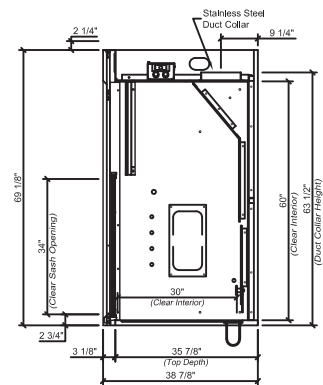


F-602 Gen-5 OS Height Bench Hood

Section - Standard Depth



Section - 30" Deep



F-603 Gen-5 OS Height Bench Hood

F-603 Isolator Gen-5 OS Height Fume Hood - Framed Vertical Sash

ISOLATOR Gen-5 OS Height Bench Fume Hood - This general purpose fume hood is designed to meet most laboratory Constant Air Volume (CAV) or Variable Air Volume (VAV) requirements and supplied with and automatic compensating upper by-pass. For VAV, use option MOD-0004 for a restricted by-pass position of observation glass. Designed to mount on a 31" deep counter top. The ISOLATOR

Gen-5 bench mounted fume hood is supplied with the following standard features:

Counter Balance Systems - Chain and sprocket system delivers the easiest and most reliable sash operation available with an exceptional product life-cycle
ISOLATOR drive system provides economical and reliable operation; tested to over 1 million cycles with no failure.

Interior Height - Interior height of 60", as opposed to the standard bench interior height of 48", to accommodate taller apparatus.

Sash Design - 1/4" thick tempered safety glass is provided with an epoxy urethane coated steel frame. Optional laminated safety glass or polycarbonate available for special applications. Hood has a framed vertical sash with a 54" exterior sightline.

Lower Airfoil - Aerodynamic flush sill design allows air to enter the fume hood even when the sash is closed ensuring efficient fume exhaust. The flip up safety trough cover allows electrical wiring or tubing into the fume hood while still permitting full closure of the sash.

Stainless Steel Type 304 Exhaust Collar - Round collar which allows for direct connection to typical exhaust ducts to reduce duct transition costs, minimize static pressure losses and exhaust noise levels.

Electrical - Two UL/CSA approved duplex receptacles provided for 120 volt service, one on each corner post. UL/CSA approved LED light fixture and switch provided. Explosion proof fixtures are available options.

Plumbing - Both corner posts are pre-punched to accept a maximum of five plumbing fittings per post. Factory pre-plumbing is available as well as plumbing fixtures from a variety of manufacturers to meet most plumbing needs.

Access Panels - Interior overlay style access panels provide convenient access and prevent accidental removal. Exterior side panels are also removable for ease of access to plumbing and electrical service fixtures.

Standards - UL 1805 Classified and tested in accordance with ASHRAE 110. Test results available upon request.



Rendering shown with optional features

Catalog Number	Width	Clear Interior Depth	Duct Diameter	34" Open @ 100 FPM	18" Open @ 100 FPM
F-603-36	36"	24"	1:10"	614 CFM @ .20" SP	325 CFM @ .06" SP
F-603-36D30	36"	30"	1:10"	614 CFM @ .20" SP	325 CFM @ .06" SP
F-603-48	48"	24"	1:12"	897 CFM @ .43" SP	475 CFM @ .12" SP
F-603-48D30	48"	30"	1:12"	897 CFM @ .43" SP	475 CFM @ .12" SP
F-603-60	60"	24"	1:12"	1181 CFM @ .40" SP	625 CFM @ .11" SP
F-603-60D30	60"	30"	1:12"	1181 CFM @ .40" SP	625 CFM @ .11" SP
F-603-72	72"	24"	1:12"	1464 CFM @ .62" SP	775 CFM @ .17" SP
F-603-72D30	72"	30"	1:12"	1464 CFM @ .62" SP	775 CFM @ .17" SP
F-603-96	96"	24"	2:10"	2031 CFM @ .55" SP	1075 CFM @ .15" SP
F-603-96D30	96"	30"	2:10"	2031 CFM @ .55" SP	1075 CFM @ .15" SP
F-603-120	120"	24"	2:12"	2597 CFM @ .89" SP	1375 CFM @ .25" SP
F-603-120D30	120"	30"	2:12"	2597 CFM @ .89" SP	1375 CFM @ .25" SP
F-603-144	144"	24"	2:12"	3164 CFM @ 1.32" SP	1675 CFM @ .37" SP
F-603-144D30	144"	30"	2:12"	3164 CFM @ 1.32" SP	1675 CFM @ .37" SP

F-603 Gen-5 OS Height Bench Hood

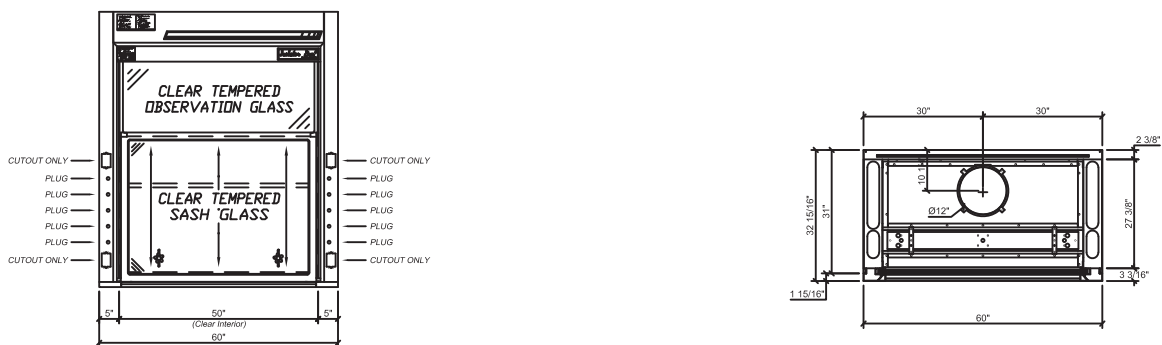
F-603-36G5 - 36" Wide



F-603-48G5 - 48" Wide

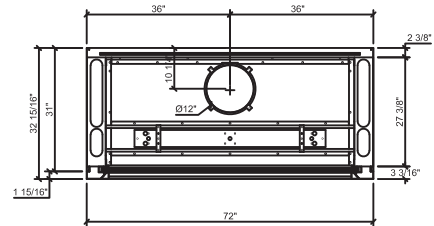
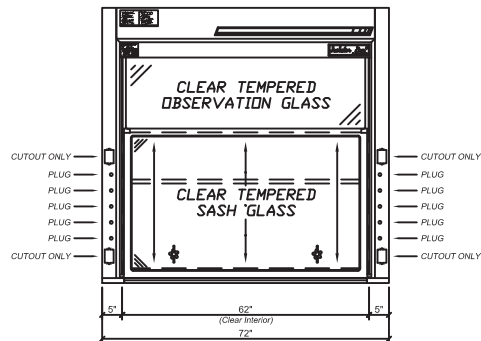


F-603-60G5 - 60" Wide

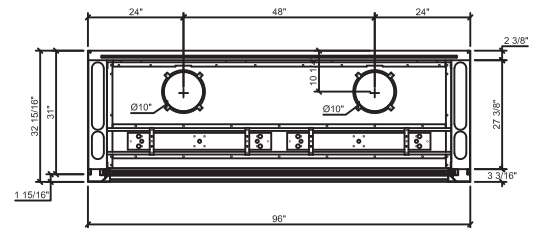
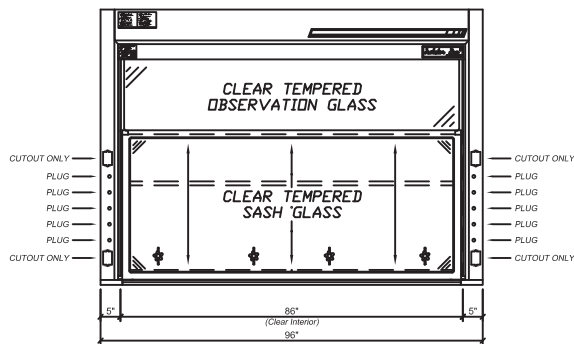


F-603 Gen-5 OS Height Bench Hood

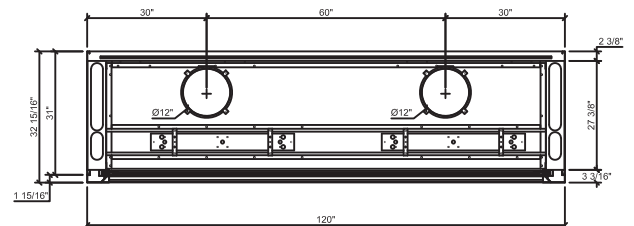
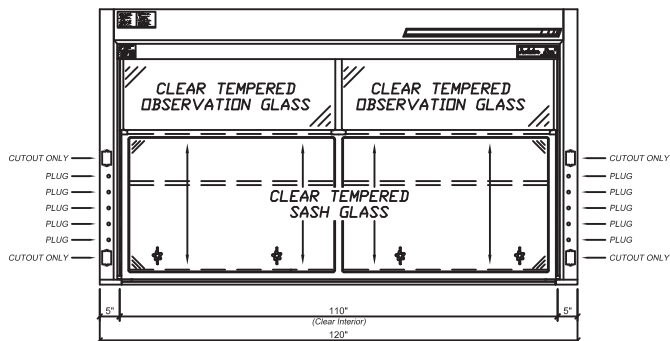
F-603-72G5 - 72" Wide



F-603-96G5 - 96" Wide

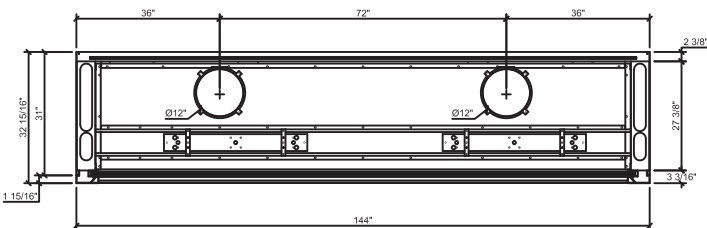
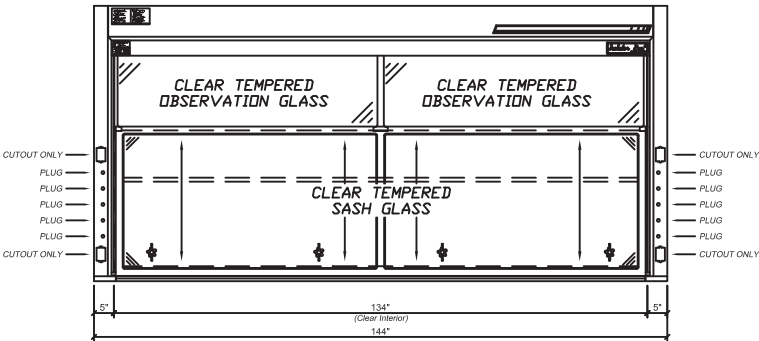


F-603-120G5 - 120" Wide

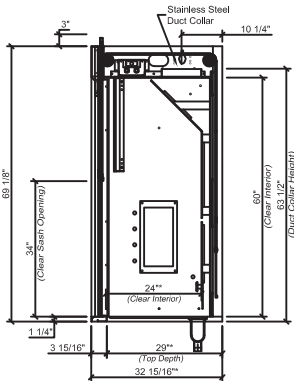


F-603 Gen-5 OS Height Bench Hood

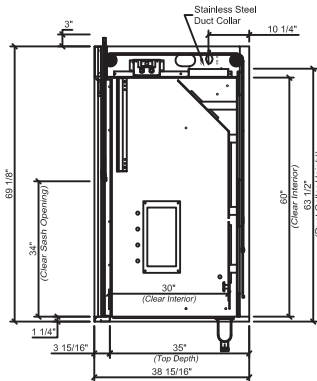
F-603-144G5 - 144" Wide



Section - Standard Depth



Section - 30" Deep





SAI SYSTEMS

Scientifically Advanced Interiors

Toll Free: (866) 527-2970

sales@saisns.com

www.saisns.com

BURNABY

TORONTO

HALIFAX